

## SUMMARY OF BENEFITS

VISION CARE SERVICES	IN-NETWORK MEMBER COST	OUT-OF-NETWORK MEMBER REIMBURSEMENT
<b>EXAM SERVICES</b>		
Exam	\$20 copay	Up to \$40
Retinal Imaging	Up to \$39	Not covered
<b>CONTACT LENS FIT AND FOLLOW-UP</b>		
Fit and Follow-up – Standard	Up to \$40	Not covered
Fit and Follow-up – Standard < 19 years of age	\$0 copay; paid in full and two follow-up visits	Up to \$40
Fit and Follow-up – Premium	10% off retail price	Not covered
Fit and Follow-up – Premium < 19 years of age	\$0 copay; 10% off retail price, then apply \$40 allowance	Up to \$40
<b>FRAME</b>		
Frame	\$0 copay; 20% off balance over \$140 allowance	Up to \$63
<b>STANDARD PLASTIC LENSES</b>		
Single Vision	\$20 copay	Up to \$25
Bifocal	\$20 copay	Up to \$40
Trifocal	\$20 copay	Up to \$65
Lenticular	\$20 copay	Up to \$65
Progressive – Standard	\$20 copay	Up to \$55
Progressive – Premium	\$20 copay; 20% off retail price less \$120 allowance	Up to \$55
<b>LENS OPTIONS</b>		
Anti Reflective Coating – Standard	\$45	Not covered
Photochromic – Non-Glass	20% off retail price	Not covered
Photochromic – Non-Glass < 19 years of age	\$0 copay	Up to \$5
Polycarbonate – Standard	\$40	Not covered
Polycarbonate – Standard < 19 years of age	\$0 copay	Up to \$5
Scratch Coating – Standard Plastic	\$15	Not covered
Tint – Solid or Gradient	\$15	Not covered
UV Treatment	\$15	Not covered
All Other Lens Options	20% off retail price	Not covered
<b>CONTACT LENSES</b>		
Contacts – Conventional	\$0 copay; 15% off balance over \$140 allowance	Up to \$112
Contacts – Disposable	\$0 copay; 100% of balance over \$140 allowance	Up to \$112
Contacts – Medically Necessary	\$0 copay; paid in full	Up to \$200
<b>OTHER</b>		
Hearing Care from Amplifon Network	Discounts on hearing exam and aids; call 1.877.203.0675	Not covered
LASIK or PRK from U.S. Laser Network	15% off retail or 5% off promo price; call 1.800.988.4221	Not covered
<b>FREQUENCY</b>	<b>ALLOWED FREQUENCY - ADULTS</b>	<b>ALLOWED FREQUENCY - KIDS</b>
Exam	Once every calendar year	Twice every calendar year
Frame	Once every other calendar year	Once every other calendar year
Lenses	Once every calendar year	Twice every calendar year
Contact Lenses	Once every calendar year	Once every calendar year

(Plan allows member to receive either contacts and frame, or frames and lens services)



### 40% OFF

additional complete pair of prescription eyeglasses

### 20% OFF

non-covered items, including non-prescription sunglasses

**Find an eye doctor**  
(Select Network)

- eyemed.com
- EyeMed Members App
- For LASIK, call 1.800.988.4221

**Heads up**

You may have additional benefits.

Log into [eyemed.com/member](http://eyemed.com/member) to see all plans included with your benefits.

# Ready to live your best EyeMed life?

There's so much more to your vision benefits than copays and coverage. Get ready to see the good stuff for yourself.

## Your network is the place to start

See who you want, when you want. You have thousands of providers to choose from – independent eye doctors, your favorite retail stores, even online options.

## Keep your eyes open for extra discounts

Members already save an average 71% off retail using their EyeMed benefits,<sup>1</sup> but our long list of special offers takes benefits even further.

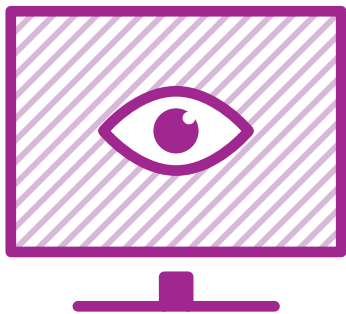
## Remember, you're never alone

We're always here to help you use your benefits like a pro. Stay in-the-know with text alerts or healthy vision resources from the experts. If it can make benefits easier for you, we do it.

<sup>1</sup>Based on weighted average of sample transactions; EyeMed Insight network/\$10 exam copay/\$10 materials copay/\$120 frame or contact lens allowance.



eye  
Med



## Create a member account at [eyemed.com](https://eyemed.com)

Everything is right there in one spot. Check claims and benefits, see special offers and find an eye doctor – search for one with the hours, location and brands you want. For maximum mobility, try the EyeMed Members App (Google Play or App Store).

INDEPENDENT  
PROVIDER  
NETWORK



LENSCRAFTERS

PEARLE  
EST. 1961  
VISION

OPTICAL